

ワイドビュー (2階スタンド) ベンチ裏側

Seating chart for the 2nd floor wide view, back of the bench. It includes sections for 自由席/A through H and 指定席/C through E. Each section shows a grid of seats with row and column numbers.

サイドアリーナ ベンチ裏側

Seating chart for the side arena, back of the bench. It shows two rows of seats with numbers 1 through 61.

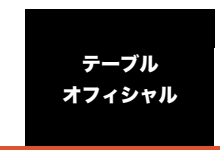
アウェー専用 ベンチ裏

Seating chart for the away team bench, back of the bench. It shows three rows of seats with numbers 1 through 15.

ベンチ裏 アウェー側

Seating chart for the back of the bench, away side. It shows three rows of seats with numbers 1 through 36.

Seating chart for the back of the bench, away side. It shows three rows of seats with numbers 1 through 31.



ベンチ裏 ホーム側

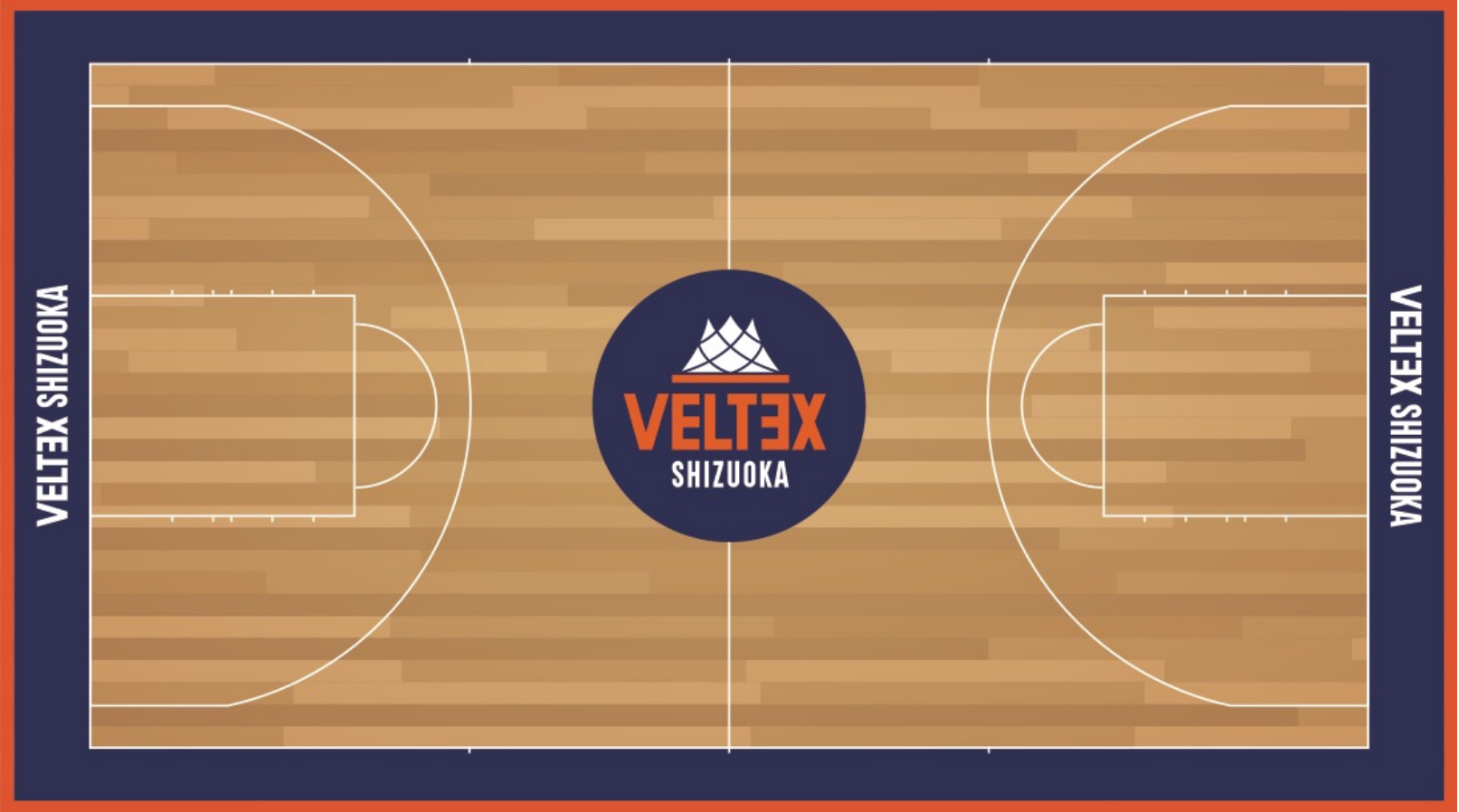
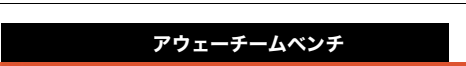
Seating chart for the back of the bench, home side. It shows three rows of seats with numbers 1 through 56.

ベンチ裏 ホーム側

Seating chart for the back of the bench, home side. It shows three rows of seats with numbers 1 through 46.

ベンチ裏 ホーム側

Seating chart for the back of the bench, home side. It shows three rows of seats with numbers 1 through 41.



コートエンド アウェー側 (Away side court end)

コートエンド アウェー側 (Away side court end)

Seating chart for court side, away side. It shows two rows of seats with numbers 1 through 32.

Seating chart for court side, away side. It shows two rows of seats with numbers 1 through 68.

Seating chart for court side, away side. It shows two rows of seats with numbers 1 through 78.

Seating chart for court side, away side. It shows two rows of seats with numbers 1 through 52.

Seating chart for court side, away side. It shows two rows of seats with numbers 1 through 62.

Seating chart for court side, away side. It shows two rows of seats with numbers 1 through 62.

コートサイド アウェー側

コートサイド ホーム側

Seating chart for court side, away side. It shows two rows of seats with numbers 1 through 50.

Seating chart for court side, away side. It shows two rows of seats with numbers 1 through 60.

Seating chart for court side, away side. It shows two rows of seats with numbers 1 through 70.

Seating chart for court side, away side. It shows two rows of seats with numbers 1 through 80.

サイドアリーナ ベンチ向かい側

Seating chart for 2F section 1. It shows a grid of seats with row and column numbers.

Seating chart for 2F section J. It shows a grid of seats with row and column numbers.

Seating chart for 2F section K. It shows a grid of seats with row and column numbers.

Seating chart for 2F section L. It shows a grid of seats with row and column numbers.

Seating chart for 2F section M. It shows a grid of seats with row and column numbers.

Seating chart for 2F section N. It shows a grid of seats with row and column numbers.

Seating chart for 2F section O. It shows a grid of seats with row and column numbers.

Seating chart for 2F section P. It shows a grid of seats with row and column numbers.

ワイドビュー (2階スタンド) ベンチ向かい側